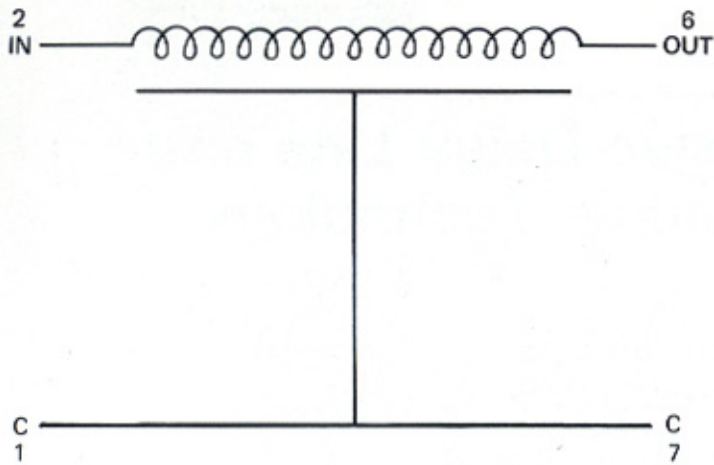


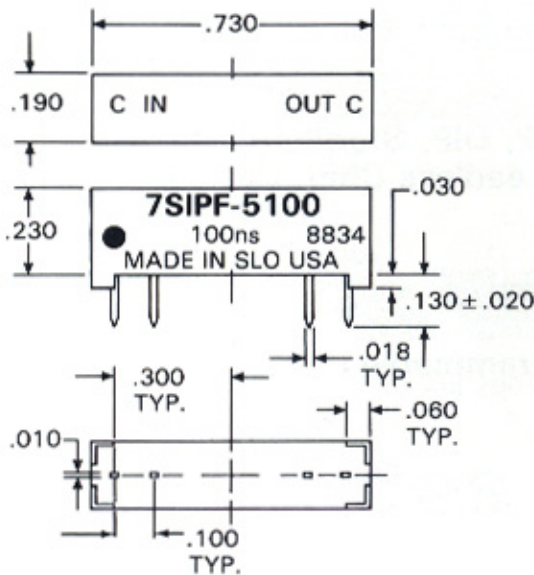
**BLOCK DIAGRAM IS SHOWN BELOW**



**PART NUMBER TABLE**

Part Number	Delay Time (ns)	Rise Time (ns)	Impedance (ohms)	DCR (ohms)
7SIPF-501	1 ± 0.2	2.0	50	0.2
7SIPF-502	2 ± 0.2	2.3		0.3
7SIPF-503	3 ± 0.3	2.7		0.4
7SIPF-504	4 ± 0.4	3.0		0.5
7SIPF-505	5 ± 0.5	3.3		0.5
7SIPF-506	6 ± 0.5	3.7		0.5
7SIPF-507	7 ± 0.5	4.0		0.5
7SIPF-508	8 ± 0.6	4.3		0.5
7SIPF-509	9 ± 0.6	4.7		0.6
7SIPF-510	10 ± 0.7	5.0		0.8
7SIPF-512	12 ± 0.7	5.7		0.8
7SIPF-514	14 ± 0.8	6.5		0.8
7SIPF-516	16 ± 0.8	7.0		0.8
7SIPF-518	18 ± 1.0	7.7		1.0
7SIPF-520	20 ± 1.0	8.5		1.1
7SIPF-522	22 ± 1.0	9.0		1.1
7SIPF-524	24 ± 1.0	10.0		1.1
7SIPF-526	26 ± 1.2	10.5		1.2
7SIPF-528	28 ± 1.2	11.0		1.2
7SIPF-530	30 ± 1.5	12.0		1.4
7SIPF-535	35 ± 1.5	13.5		1.6
7SIPF-540	40 ± 2.0	15.0		2.6
7SIPF-545	45 ± 2.0	16.5		2.6
7SIPF-550	50 ± 2.5	18.5		2.8
7SIPF-560	60 ± 2.5	22.0		3.0
7SIPF-570	70 ± 3.0	25.0	3.2	
7SIPF-580	80 ± 3.0	28.0	3.5	
7SIPF-590	90 ± 4.0	32.0	5.2	
7SIPF-5100	100 ± 4.0	35.0	5.6	
7SIPF-5110	110 ± 4.5	38.0	5.6	
7SIPF-5120	120 ± 4.5	42.0	5.8	
7SIPF-5130	130 ± 5.0	45.0	5.8	
7SIPF-5140	140 ± 5.0	48.0	6.8	
7SIPF-5150	150 ± 5.5	51.0	6.8	
7SIPF-5160	160 ± 5.5	55.0	6.8	
7SIPF-5170	170 ± 6.0	58.0	7.0	
7SIPF-5180	180 ± 6.0	61.0	7.5	
7SIPF-5190	190 ± 7.0	65.0	7.5	
7SIPF-5200	200 ± 8.0	68.0	8.0	
7SIPF-5210	210 ± 8.5	71.0	8.0	
7SIPF-5220	220 ± 9.0	75.0	8.0	
7SIPF-5230	230 ± 9.5	78.0	8.0	
7SIPF-5240	240 ± 10.0	81.0	8.0	
7SIPF-5250	250 ± 10.0	84.0	8.0	

**MECHANICAL DETAIL IS SHOWN BELOW**



**TEST CONDITIONS**

1. All measurements are made at 25°C.
2. Test procedures in accordance with MIL-D-23859.

**OPERATING CHARACTERISTICS**

- Total delay tolerance: . . . . . See tabulations
- Rise time, maximum: . . . . . See tabulations
- Impedance: . . . . . 50, 100 or 200 ohms
- Impedance tolerance: . . . . . ± 10%
- DC resistance, maximum: . . . . . See tabulations
- Attenuation, maximum: . . . . . .5 db
- Distortion, maximum: . . . . . ± 5%
- Overshoot, maximum: . . . . . 10%
- Working voltage, maximum: . . . . . 25V DC
- Dielectric strength: . . . . . 100V DC @ 50ua
- Insulation resistance, minimum: . . . . . 10,000 megohms @ 100V DC