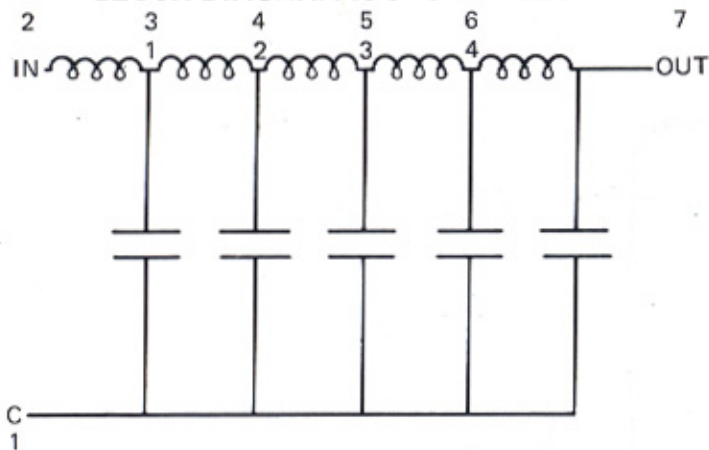


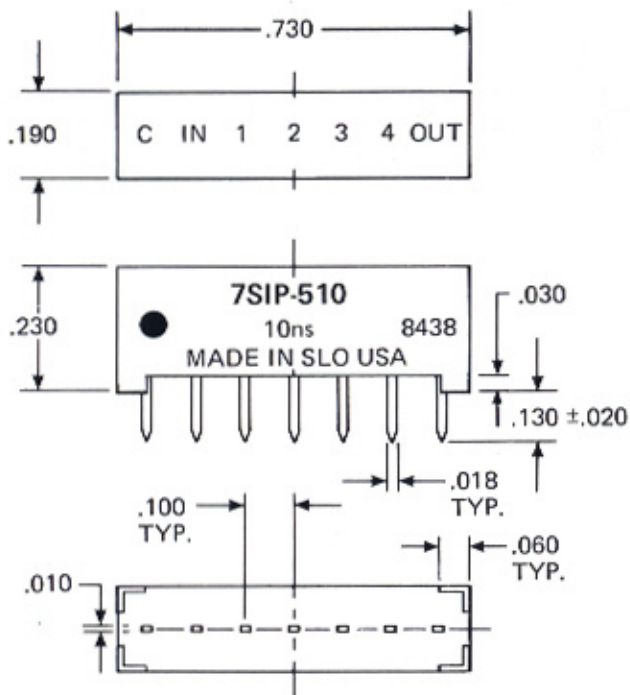
**BLOCK DIAGRAM IS SHOWN BELOW**



**PART NUMBER TABLE**

Part Number	Delay Time (ns)	Rise Time (ns)	Tap Delay (ns)	Impedance (ohms)	DCR (ohms)	
7SIP-505	5 ±0.5	2.5	1 ±0.4	50	1.0	
7SIP-510	10 ±0.7	4.5	2 ±0.5		1.0	
7SIP-515	15 ±1.0	6.5	3 ±0.6		1.0	
7SIP-520	20 ±1.2	9.0	4 ±0.8		1.0	
7SIP-525	25 ±1.5	10.0	5 ±1.0		1.0	
7SIP-530	30 ±1.5	12.0	6 ±1.2		1.5	
7SIP-535	35 ±2.0	14.0	7 ±1.4		1.5	
7SIP-540	40 ±2.0	16.0	8 ±1.6		1.5	
7SIP-545	45 ±2.5	17.0	9 ±1.8		1.5	
7SIP-550	50 ±2.5	18.0	10 ±2.0		1.5	
7SIP-575	75 ±4.0	28.0	15 ±2.5	1.5		
7SIP-5100	100 ±5.0	36.0	20 ±3.0	1.5		
7SIP-5150	150 ±6.5	52.0	30 ±5.0	1.5		
7SIP-5200	200 ±10	70.0	40 ±6.0	50	1.5	
7SIP-1005	5 ±0.5	2.8	1 ±0.4	100	1.0	
7SIP-1010	10 ±0.7	4.8	2 ±0.5		1.0	
7SIP-1015	15 ±1.0	6.8	3 ±0.6		1.0	
7SIP-1020	20 ±1.2	9.0	4 ±0.8		1.5	
7SIP-1025	25 ±1.5	10.0	5 ±1.0		1.5	
7SIP-1030	30 ±1.5	12.0	6 ±1.2		1.5	
7SIP-1035	35 ±2.0	14.0	7 ±1.4		1.5	
7SIP-1040	40 ±2.0	16.0	8 ±1.6		1.5	
7SIP-1045	45 ±2.5	17.0	9 ±1.8		1.5	
7SIP-1050	50 ±2.5	18.0	10 ±2.0		1.5	
7SIP-1060	60 ±3.0	24.0	12 ±2.0	2.0		
7SIP-1070	70 ±3.5	26.0	14 ±2.5	2.0		
7SIP-1075	75 ±4.0	28.0	15 ±2.5	2.0		
7SIP-1080	80 ±4.0	30.0	16 ±2.5	2.0		
7SIP-1090	90 ±4.5	32.0	18 ±3.0	2.0		
7SIP-10100	100 ±5.0	36.0	20 ±3.0	100	2.0	
7SIP-2005	5 ±0.5	3.5	1 ±0.4	200	1.5	
7SIP-2010	10 ±0.7	5.5	2 ±0.5		1.5	
7SIP-2015	15 ±1.0	6.8	3 ±0.6		1.5	
7SIP-2020	20 ±1.2	9.0	4 ±0.8		1.5	
7SIP-2025	25 ±1.5	10.0	5 ±1.0		1.5	
7SIP-2030	30 ±1.5	12.0	6 ±1.2		1.5	
7SIP-2040	40 ±2.0	16.0	8 ±1.6		1.5	
7SIP-2050	50 ±2.5	20.0	10 ±2.0		200	1.5

**MECHANICAL DETAIL IS SHOWN BELOW**



**TEST CONDITIONS**

1. All measurements are made at 25°C.
2. Test procedures in accordance with MIL-D-23859.

**OPERATING CHARACTERISTICS**

- Total delay tolerance: . . . . . See tabulations
- Tap delay tolerance: . . . . . See tabulations  $\phi$
- Rise time, maximum: . . . . . See tabulations
- Impedance: . . . . . 50, 100 or 200 ohms
- Impedance tolerance: . . . . . ±10%
- DC resistance, maximum: . . . . . See tabulations
- Attenuation, maximum: . . . . . .5 db
- Distortion, maximum . . . . . ±5%
- Overshoot, maximum . . . . . 10%
- Working voltage, maximum . . . . . 25V DC
- Dielectric strength . . . . . 100V DC @ 50ua
- Insulation resistance, minimum: . . . . . 10,000 megohms @ 100V DC

$\phi$  Referenced from input of delay line.

Special delay lines can be readily manufactured with longer or specific delays, impedances, rise times and package configurations for specific applications.