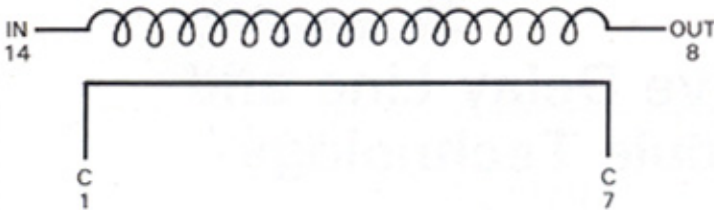
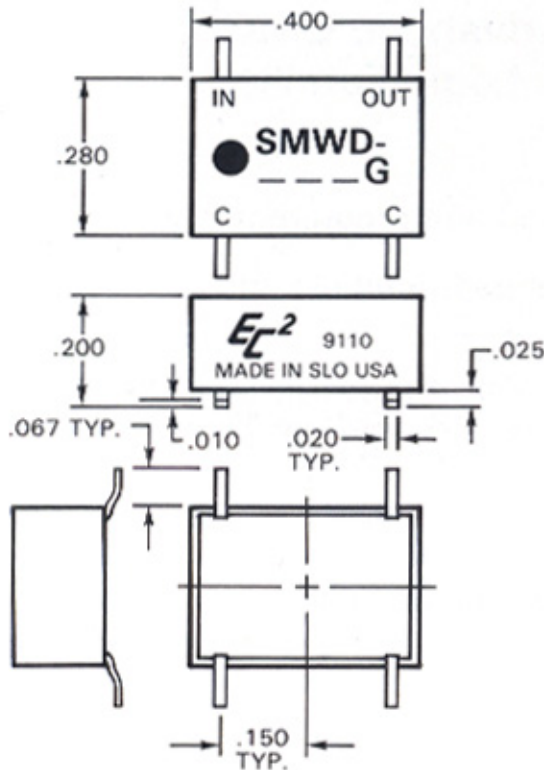


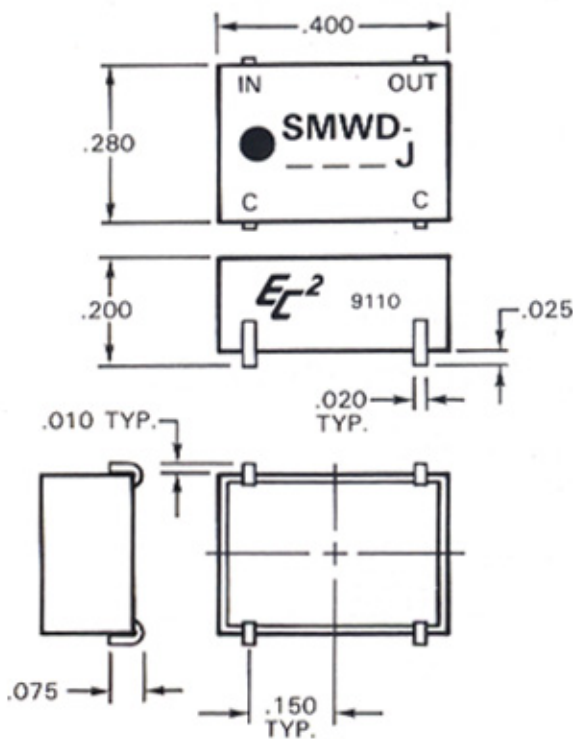
BLOCK DIAGRAM IS SHOWN BELOW



MECHANICAL DETAILS ARE SHOWN BELOW



*Gull Wing Configuration



*J-lead Configuration

TEST CONDITIONS

1. All measurements are made at 25°C.
2. Test procedures in accordance with MIL-D-23859.

OPERATING CHARACTERISTICS

- Total delay tolerance: See tabulations
- Rise time, maximum: See tabulations
- Impedance: 50, 100, 200, 350, or 500 ohms
- Impedance tolerance: ± 10%
- DC resistance, maximum: See tabulations
- Attenuation, maximum:5 db
- Distortion, maximum: ± 5%
- Overshoot, maximum: 10%
- Working voltage, maximum: 25V DC
- Dielectric strength: 100V DC @ 50ua
- Insulation resistance, minimum: 10,000 megohms@ 100V DC

PART NUMBER TABLE

*Suffix Part Number with G (for Gull Wing) or J (for J-lead)
Examples: SMWD-501G (Gull Wing) or SMWD-5250J (J-lead)

Part Number	Delay Time (ns)	Rise Time (ns)	Impedance (ohms)	DCR (ohms)
SMWD-501	1 ± 0.2	1.4	↑	0.2
SMWD-502	2 ± 0.2	1.4		0.3
SMWD-503	3 ± 0.3	1.7		0.4
SMWD-504	4 ± 0.4	2.6		0.4
SMWD-505	5 ± 0.5	2.6		0.4
SMWD-506	6 ± 0.5	2.6		0.4
SMWD-507	7 ± 0.5	3.0		0.4
SMWD-508	8 ± 0.6	3.2		0.5
SMWD-509	9 ± 0.6	3.6		0.5
SMWD-510	10 ± 0.7	4.4		0.6
SMWD-512	12 ± 0.7	4.4		0.6
SMWD-514	14 ± 0.8	5.2		0.6
SMWD-516	16 ± 0.8	5.8		0.6
SMWD-518	18 ± 1.0	6.5		0.6
SMWD-520	20 ± 1.0	8.5		0.8
SMWD-522	22 ± 1.0	8.5		0.8
SMWD-524	24 ± 1.0	8.5		0.8
SMWD-526	26 ± 1.2	9.2		0.8
SMWD-528	28 ± 1.2	9.5		0.8
SMWD-530	30 ± 1.5	12.0		1.1
SMWD-535	35 ± 1.5	14.5		1.1
SMWD-540	40 ± 2.0	16.0		1.2
SMWD-545	45 ± 2.0	18.0		1.2
SMWD-550	50 ± 2.5	19.0		1.2
SMWD-560	60 ± 2.5	20.0		1.2
SMWD-570	70 ± 3.0	23.0		1.2
SMWD-580	80 ± 3.0	26.0		1.2
SMWD-590	90 ± 4.0	32.0	1.2	
SMWD-5100	100 ± 4.0	35.0	1.3	
SMWD-5110	110 ± 4.5	38.0	1.3	
SMWD-5120	120 ± 4.5	42.0	2.3	
SMWD-5130	130 ± 5.0	46.0	2.3	
SMWD-5140	140 ± 5.0	48.0	2.3	
SMWD-5150	150 ± 5.5	50.0	2.5	
SMWD-5160	160 ± 5.5	53.0	2.5	
SMWD-5170	170 ± 6.0	56.0	2.7	
SMWD-5180	180 ± 6.0	58.0	2.7	
SMWD-5190	190 ± 7.0	62.0	2.8	
SMWD-5200	200 ± 8.0	68.0	2.8	
SMWD-5210	210 ± 8.5	68.0	3.0	
SMWD-5220	220 ± 9.0	74.0	3.0	
SMWD-5230	230 ± 9.5	74.0	3.0	
SMWD-5240	240 ± 10.0	80.0	3.0	
SMWD-5250	250 ± 10.0	80.0	↓	3.0