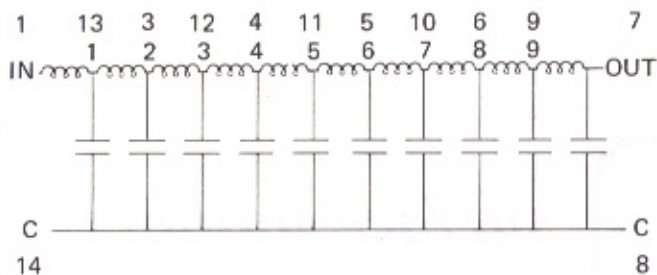
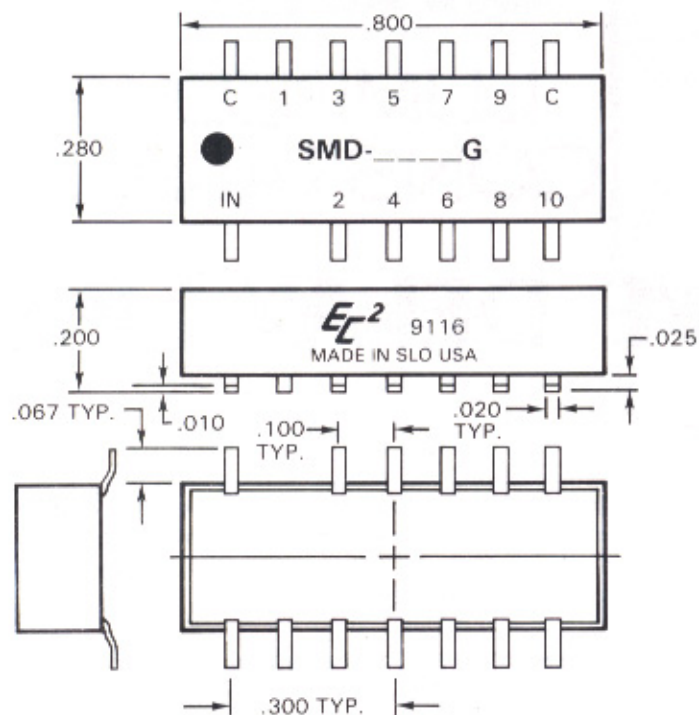


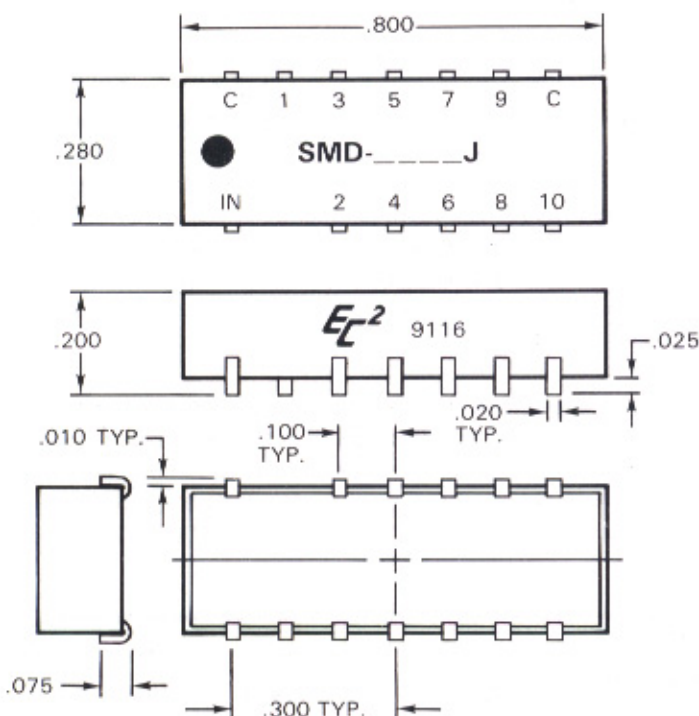
BLOCK DIAGRAM IS SHOWN BELOW



MECHANICAL DETAILS ARE SHOWN BELOW



***Gull Wing Configuration**



***J-Lead Configuration**

TEST CONDITIONS

1. All measurements are made at 25°C.
2. Test procedures in accordance with MIL-D-23859.

OPERATING CHARACTERISTICS

- Total delay tolerance: See tabulations
- Rise time, maximum: See tabulations
- Impedance: 50, 100, or 200 ohms
- Impedance tolerance: ± 10%
- DC resistance, maximum: . . . See tabulations
- Attenuation, maximum:5 db
- Distortion, maximum: ± 5%
- Overshoot, maximum: 10%
- Working voltage, maximum: . . . 25V DC
- Dielectric strength: 100V DC @ 50ua
- Insulation resistance, minimum: 10,000 megohms@ 100V DC

PART NUMBER TABLE

*Suffix Part Number with G (for Gull Wing) or J (for J-lead)
Examples: SMD-550G (Gull Wing) or SMD-1050J (J-lead).

Part Number	Delay Time (ns)	Rise Time (ns)	φ Tap Delay (ns)	Impedance (ohms)	DCR (ohms)	
SMD-505	5 ± 0.5	2.0	0.5 ± 0.2	50	1.5	
SMD-510	10 ± 0.7	3.5	1.0 ± 0.5		1.5	
SMD-515	15 ± 1.0	4.5	1.5 ± 0.5		1.5	
SMD-520	20 ± 1.2	5.5	2.0 ± 0.5		1.5	
SMD-525	25 ± 1.5	6.5	2.5 ± 0.6		1.5	
SMD-530	30 ± 1.5	8.0	3.0 ± 0.6		1.5	
SMD-535	35 ± 2.0	9.0	3.5 ± 0.8		2.0	
SMD-540	40 ± 2.0	11.0	4.0 ± 0.8		2.0	
SMD-545	45 ± 2.5	12.0	4.5 ± 1.0		2.0	
SMD-550	50 ± 2.5	13.0	5.0 ± 1.0		2.5	
SMD-560	60 ± 3.0	15.0	6.0 ± 1.2	50	2.5	
SMD-570	70 ± 3.5	18.5	7.0 ± 1.4		2.5	
SMD-580	80 ± 4.0	21.0	8.0 ± 1.6		3.0	
SMD-590	90 ± 4.5	22.0	9.0 ± 1.8		4.5	
SMD-5100	100 ± 5.0	22.0	10.0 ± 2.0		5.0	
SMD-5150	150 ± 6.5	32.0	15.0 ± 2.5		5.0	
SMD-5200	200 ± 10.0	40.0	20.0 ± 3.0		6.0	
SMD-1005	5 ± 0.5	2.0	0.5 ± 0.2		100	1.5
SMD-1010	10 ± 0.7	3.5	1.0 ± 0.5			1.5
SMD-1015	15 ± 1.0	5.0	1.5 ± 0.5			1.5
SMD-1020	20 ± 1.2	5.0	2.0 ± 0.5	1.5		
SMD-1025	25 ± 1.5	7.0	2.5 ± 0.6	2.0		
SMD-1030	30 ± 1.5	8.0	3.0 ± 0.6	2.0		
SMD-1040	40 ± 2.0	11.0	4.0 ± 0.8	2.5		
SMD-1050	50 ± 2.5	12.5	5.0 ± 1.0	2.5		
SMD-1060	60 ± 3.0	12.5	6.0 ± 1.2	2.5		
SMD-1070	70 ± 3.5	18.5	7.0 ± 1.4	2.5		
SMD-1080	80 ± 4.0	20.0	8.0 ± 1.6	5.5		
SMD-1090	90 ± 4.5	22.0	9.0 ± 1.8	5.5		
SMD-10100	100 ± 5.0	24.0	10.0 ± 2.0	100	6.5	
SMD-10150	150 ± 6.5	32.0	15.0 ± 2.5		6.5	
SMD-2010	10 ± 0.7	3.5	1.0 ± 0.5		200	2.0
SMD-2020	20 ± 1.2	6.0	2.0 ± 0.6			2.0
SMD-2025	25 ± 1.5	7.0	2.5 ± 0.6			2.0
SMD-2030	30 ± 1.5	8.0	3.0 ± 0.6			2.0
SMD-2040	40 ± 2.0	10.0	4.0 ± 0.8			2.5
SMD-2050	50 ± 2.5	12.0	5.0 ± 1.0			2.5
SMD-2060	60 ± 3.0	14.0	6.0 ± 1.2			4.0
SMD-2080	80 ± 4.0	19.0	8.0 ± 1.6			5.0
SMD-20100	100 ± 5.0	24.0	10.0 ± 2.0	5.0		

Special delay lines can be readily manufactured with longer or specific delays, impedances, rise times and package configurations for specific applications.